



AQUA-STOP CRACK FILLER

Fast Setting Cementitious Water Stop

INSTALLATION INSTRUCTIONS

Surface Preparation

Like all good building practices, preparation is very important to ensure that the product will work with 100% effectiveness. It is very important that the area to be filled be chiseled out as described below. If you attempt to apply **CRACK FILLER** to a flat wall surface over the crack without creating a cavity for the product, it will have nothing to adhere to and will not stop the leak.

- Area to be filled must be sound, clean and free of any loose surface contamination.
- Remove any soft, deteriorated, crumbling and unsound material.
- For cracks and holes: Cut or chisel out the concrete or masonry surrounding the hole or crack to a minimum depth of 1 inch and width of 3/4 inch. Undercut the crack or hole in the shape of an inverted "V" to make the bottom of the cut area wider than the top. This will provide a cavity for the product to fill and bond to during initial set and final cure.
- For around pipes: Carefully chisel out an opening around the pipe at least 1 inch deep and 1/2 inch wide.
- Flush, blow or vacuum any loose particles, dust and other foreign materials from the prepared area.
- Wet the area to be patched with clean water prior to applying the **CRACK FILLER**.

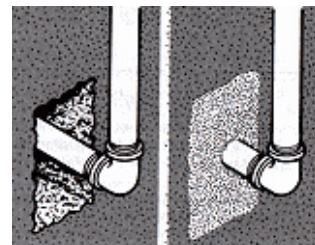
Mixing

- The 10lb bag of powder should be mixed into 12 – 16 oz. of warm (not hot), clean water and stirred thoroughly to a trowelable mortar consistency. Start off with 12oz of water and add more water as necessary.
- For small areas, mix only a small quantity of material as the working time is less than 30 seconds.
- Always add powder to water, NEVER water to powder.

Application

- Ensure that the area to be filled has been chiseled out and prepared as per the instructions above.
- Mix an appropriate amount of powder with warm water to desired consistency and quickly place firmly into the crack or hole using gloved hand or a brick jointer. Hold firmly in place until material sets – approximately 10-30 seconds.
- Do not apply in temperatures below 40F (5C) or to a frozen substrate.
- Do not apply to a dry surface - surface must be pre-wetted with water before product is applied.

- For areas around pipes, pack **CRACK FILLER** tightly into the chiseled out opening around the pipe and press in place until the product sets. Then quickly smooth the patch with a damp tool as the working time is less than 30 seconds before the product is fully cured.



Curing

- Once **CRACK FILLER** has set, **AQUA-STOP** can then be applied to the entire wall surface.

Safety

- This product contains Portland cement and silica and is highly alkaline. Avoid contact with skin and eyes.
- Wear the chemical resistant gloves provided and protective eyewear during mixing and application.
- After any contact with the skin, wash with plenty of clean water. In case of eye contact, rinse immediately with plenty of clean fresh water for a minimum of 10 minutes, and seek medical advice.
- **KEEP OUT OF REACH OF CHILDREN**

Storage and Shelf Life

AQUA-STOP CRACK FILLER must be stored in a dry enclosed area off the ground. Shelf life in un-opened container is 12 months, from date of manufacture. Once mixed, any unused product should be disposed of according to local regulations.

Limited Warranty

It is the responsibility of the customer to determine the suitability of the product for the intended purpose. Factors such as temperature, surface preparation and applicator's skill are beyond the control of Aquaseal. Therefore, the manufacturer's liability is limited to the replacement of the defective material only.